



## **REGIONAL ROADS & TRANSPORT**

### LINK ROAD, WATANOBBI TO SPARKS ROAD

#### **What's needed?**

State Government:

- Provide funding for the design and construction of the project.
- Assist Central Coast Council with the management of ecological issues which may arise.

Central Coast Council will:

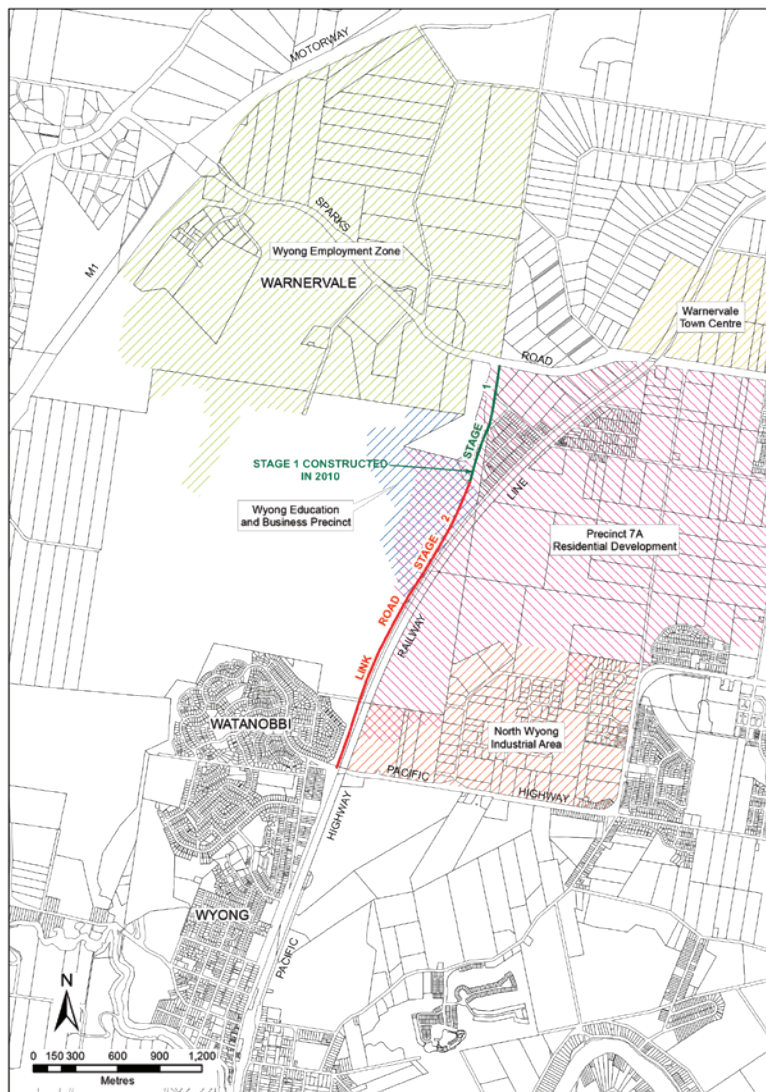
- Provide and dedicate the necessary road reserve.
- Consult with relevant stakeholders including Transport for NSW, RMS and Ausgrid.

#### **Description**

The Link Road is a new direct connection from the Pacific Highway, Watanobbi, to Sparks Road, Warnervale that will improve access between Wyong Town Centre and the expanding Warnervale Growth Area, as well as provide easier access to the M1 Motorway.

The road is critical to the expansion of employment, business, housing and education opportunities in the Warnervale Growth Area, including future development of the Wyong Employment Zone, the Wyong Education and Business Precinct, residential development at Warnervale, and the new Warnervale Town Centre.

Together these developments will provide around 8,500 jobs and housing for up to 4,200 people. The estimated cost of the Link Road is \$200m with an expected construction time of 18 months.



## What's been done?

The first stage at the northern end from Sparks Road has been constructed by Central Coast Council at the cost of \$17.3m with \$6.5m of Federal Government funding. RMS is proceeding with the design of the remainder of the road. The NSW Government has committed to invest \$25m on the Warnervale Link Road (2015-19 Election Commitment).

## Benefits

The Link Road will:

- Stimulate development and create jobs.
- Reduce traffic and create spare capacity on the existing Pacific Highway.
- Extend the life of existing roads and provide more efficient bus servicing.
- Halve local travel times.

North Loop Road Ourimbah NSW 2258 | Ph: (02) 4349 4949 | Email: [mail@rdacc.org.au](mailto:mail@rdacc.org.au) | Web: [www.rdacc.org.au](http://www.rdacc.org.au)